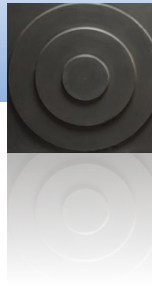
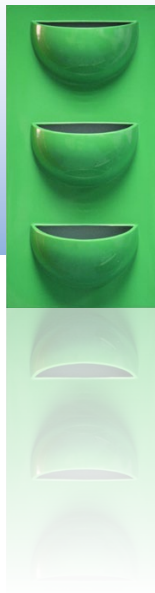


# livinggreen design

Feature Wall 2014/15



# Feature Wall

## Feature Wall from Livinggreen Design is quite simply a new concept in wall decoration.

This innovative modular panel system allows you to specify and build a unique wall that can be a complex or simple as required. Plain, single or multicolour panels can be interspersed with a multitude of other designs including 3D contours, logos, artwork or pictures, shelves and a variety of live and artificial planting.

Use Feature Wall to create a beautiful replica green wall featuring patterns,

colours, textures in formal or rainforest format. If you want real plants then Feature Wall has modules for that too, allowing you to put in as many or as few as required, from a full green wall to a single planted panel.

But the beauty of the system is to mix and match to create the perfect solution for every situation. Use it in receptions to bring alive a company logo. Replace tired artworks with multi-dimensional displays blending colour, form, visuals and plants. Match panel finishes and colours to plant containers, unifying the interior design.

As Feature Wall panels are hung like pictures, they can be demounted in seconds, rearranged into a different format and panels swapped allowing seasonal colour schemes, Christmas displays or artwork changes.

From a single panel to a full wall covering and everything in between, Feature Wall offers the ultimate in flexible design – you can even design your own panels as everything is manufactured and finished here in the UK using advanced composite technology for the ultimate in lightness and strength.

© Copyright Livinggreen Design Images.  
Credit: Attala Creations for composite images on page 3,6(1),7,10(1).





# Panel Options

Feature Wall is designed on a 50cm x 50cm grid using any combination of the following standard panel sizes: 50cm x 50cm; 100cm x 50cm; 50cm x 100cm and 100cm x 100cm. All panels are 53mm deep, excluding any planting/contoured projections.

Larger panel sizes are available to special order if required.

All panel styles are available in any RAL Classic range colour in polished, silk or matt while most Pantones and other colour systems can be matched if required. Feature Wall is also offered in our incredible range of special finishes including gold & silver leaf, coloured leaf, crackle, dapple and a range of pearlescent and metallic effects. See page 11 for full details.

Corporate logos, photographs or artworks and family pics can easily be incorporated using vinyls and signwriting.

Live planting panels have a self contained space for our special water retaining lightweight compost mix. These units are watered by hand and indoors, can last approx 4 weeks without further water depending upon location. Simplicity is the key word here – no complex watering system, nothing to go wrong, no extra costs.

For artificial planting frame panels see page 8

For full specifications and sizes see our current price list.

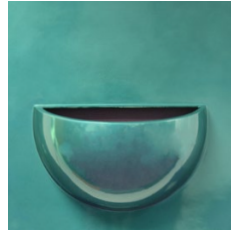
50cm x 50cm



Blank



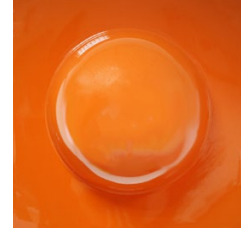
Planted Frame



1 Pocket



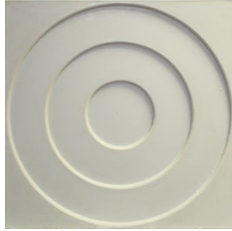
4 Pocket



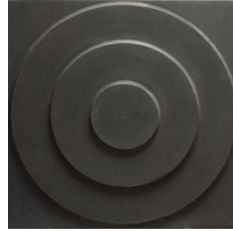
Dome



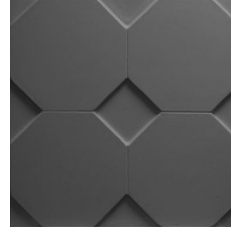
Stack



Inner Circle



Outer Circle

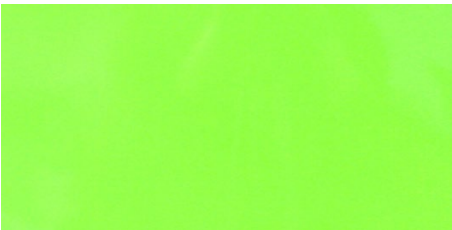


Hexagon

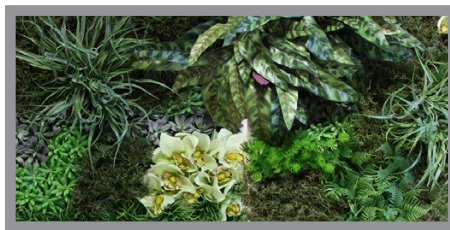


Logo/Pic

100cm x 50cm



Blank



Planted Frame



Logo/Pic



Shelf



1 Pocket

# Panel Options

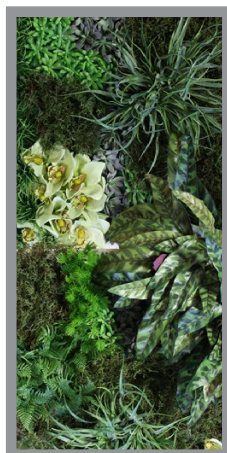
50cm x 100cm



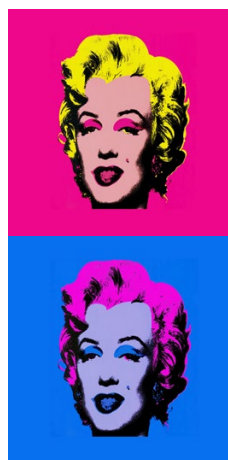
Triple Pocket



Blank

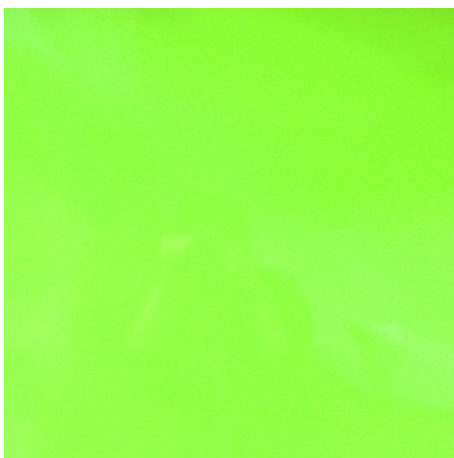


Planted Frame



Logo/Pic

100cm x 100cm



Blank



Planted Frame



Logo/Pic



1 Pocket

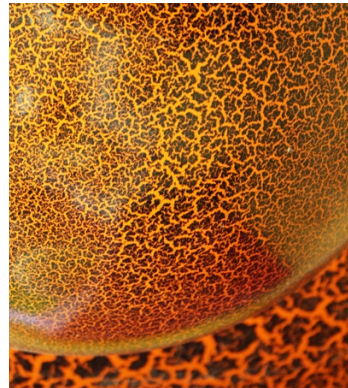


Dome

## Wall Installation

Installing a feature wall is simplicity itself and can be undertaken by anyone competent at hanging picture frames. Each panel unit is supplied with our special 2 piece hanging system which incorporates a built in level indicator to ensure correct horizontal alignment, while the interlocking pieces slide horizontally meaning only the vertical distance between panels needs to be accurately measured. With minimal experience it is possible to attach all the hanging rails to a wall before putting a single one up. For customers who want minimal holes in their walls, we can supply backing panels allowing construction of 2m x 1m modules that can be attached to the wall by 6 wall bolts.

# Feature Wall





# Replica Green Wall Panel Options

**Live greenwalls are notorious for high maintenance and installation costs, not to mention what happens when things go wrong. The answer is to use replica or artificial plants to create anything from a single panel to a full wall clad in fantasy foliage or rainforest effect.**

Bring us your ideas and let our experienced landscape designers specify a unique composition, perfect for your individual space. Over 20 flowers and foliages can be specified as single panels or mixed together to create colourful 'living' pictures in addition to a multitude of variations on the rainforest theme. Many of the foliages can be used outdoors too, to create exterior walls, perfect maintenance free decoration for terraces and patios.

Like all our panels, replica planting units can be mixed with any of our other panel options to bring incredible choice, colour and texture to your own, completely individual, Feature Wall.





# Select Replica Options

Available as single panels or in composition. Other choices available (see our replica plant catalogue)



pine  
-mini



sedum  
-green



boxwood  
-silver



pine  
-green



flowers  
-lilac



flowers  
-purple/green



boxwood  
-gold



flower bud



pine  
-spruce



flowerbombe  
-yellow



sedum  
-black



eucalyptus  
-green



green algae



flowerbombe  
-purple



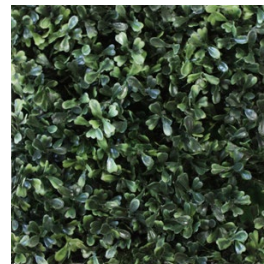
green fern



springueri



flowers  
-orange



boxwood  
-green



cactus  
-grey



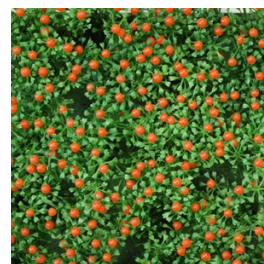
flowers  
-white



short grass



eucalyptus  
-black



nertera  
-orange



flowerbombe  
-white



flowerbombe  
-orange

# Feature Wall



# Finish Options

NB: the colours shown throughout this publication are only as accurate as the four colour printing process can achieve, therefore they should be used only as a guide.

Other colours available including Pantone matching and other colour systems, see website for details.

Polished, Satin & Matt available in any RAL K7 Classic colour

Examples of our standard colours.

Dutch Orange Flame Red Primrose Yellow Juicy Aubergine Pistachio Green Ocean Turquoise Brilliant White Jet Black Hot Pink Pastel Violet

Gold / Silver / Colour Leaf

Genuine 22ct gold available at extra cost.

Gold Leaf Silver Leaf Emerald Leaf Mint Leaf Regal Leaf Lemon Leaf Aqua Leaf Coral Leaf Ruby Leaf Rose Leaf

Pearlescents

Red Deep Blue Green Purple Peacock Blue Latte Brown Pearl Grey Pearl Green

Metallics

Metallic Silver Metallic Graphite Metallic Copper Metallic Bronze Metallic Gold Stardust Purple Stardust Aquamarine Stardust Silver Stardust Gold Stardust Black

Natural

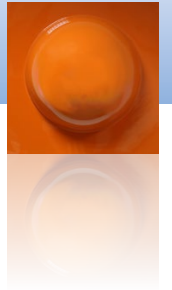
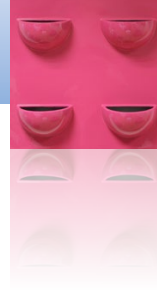
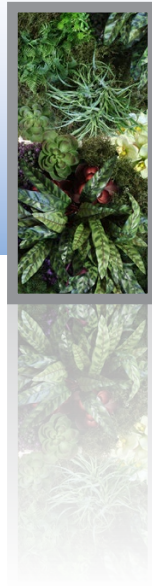
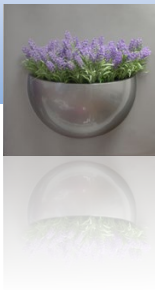
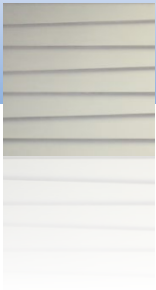
Dapple

Aged Lead Rust Sandstone Portland Stone Cretan Terracotta Dapple Grey Dapple Brown Dapple Purple Dapple Red Dapple Orange

Crackle

Dutch Orange Juicy Aubergine Key Lime Green Metallic Gold Metallic Silver

Crackle finishes can be specified in any combination of two colours. Please note that the crackle effect is entirely random and large and small crackles can be present on the same panel.



livinggreen  
design

[www.livingreendesign.com](http://www.livingreendesign.com)

Feature Wall is a brand name of Livinggreen Design Ltd  
t: +44 (0)131 440 9804 f: +44 (0)131 440 9805 e: [enquire@livingreendesign.com](mailto:enquire@livingreendesign.com)